

User Manual

Wireless audio and video transmitter



Freely Transmitting Video

Contents

I. Device and accessories.....	1
II. Description of parts	2
III. Description of device.....	3
IV. Operation.....	5
V. Other functions.....	8
VI. FAQ.....	9
VII. Warranty.....	12
VIII. Packing list.....	14

Information on copyrights

This User Manual includes various restrictions and standards with the aim to ensure safe installation, in case of any harmful effect during use and installation of the product.

The product emits wireless radiation during use, and may produce interference with wireless communication equipment if it is not installed as per the installation instructions, or is installed inappropriately. The copyright of this manual belongs to us, and no third party shall copy or reproduce the content in this manual without our consent.

Disclaimer

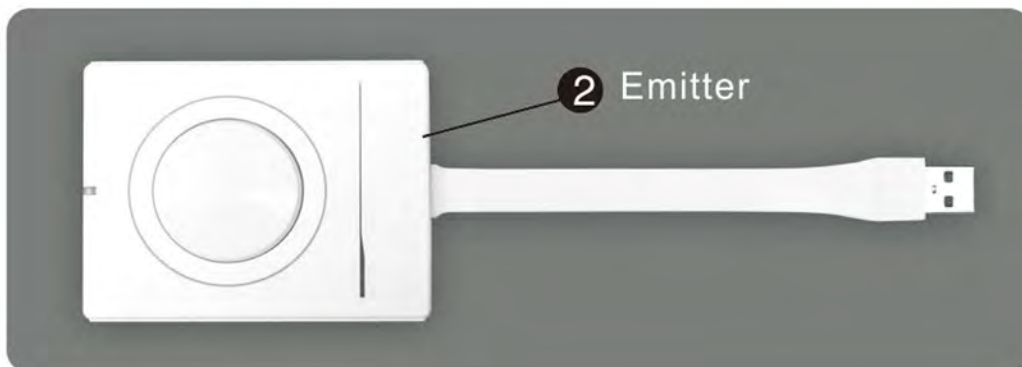
We reserve the rights to further amend or update the manual due to any upgrade or changes in the product, without providing any prior notice of the same.

1. Receiver: A wireless screen mirroring video receiver, connected to a projector or large display equipment.



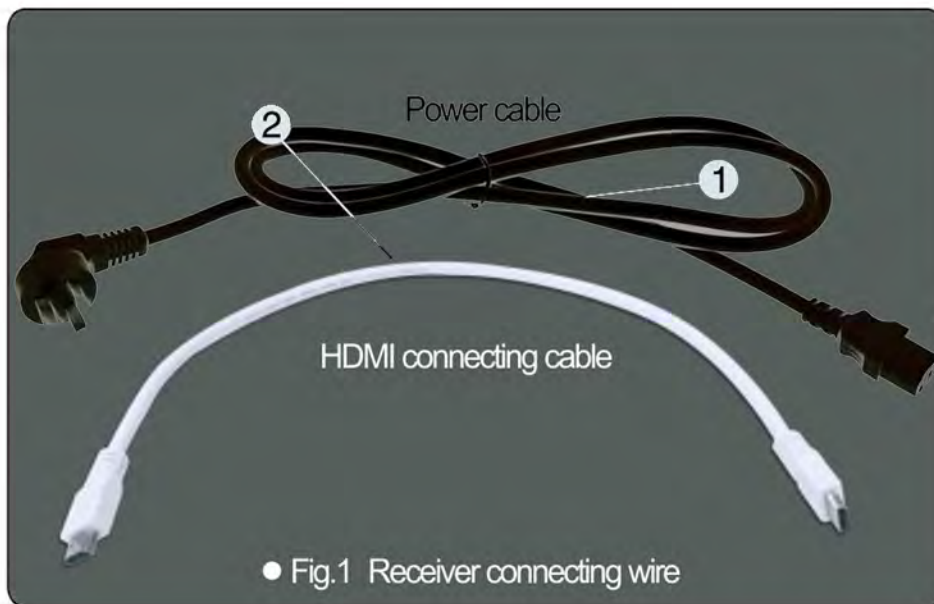
Receiver

2. Emitter: A one-button screen projector emitter, specially-designed for Windows or Mac OS laptop.

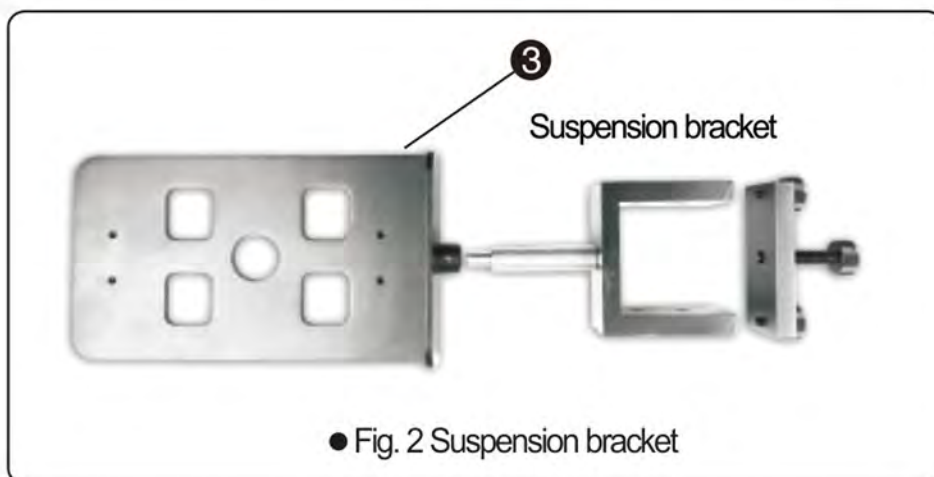


Emitter

II. Descriptions of parts

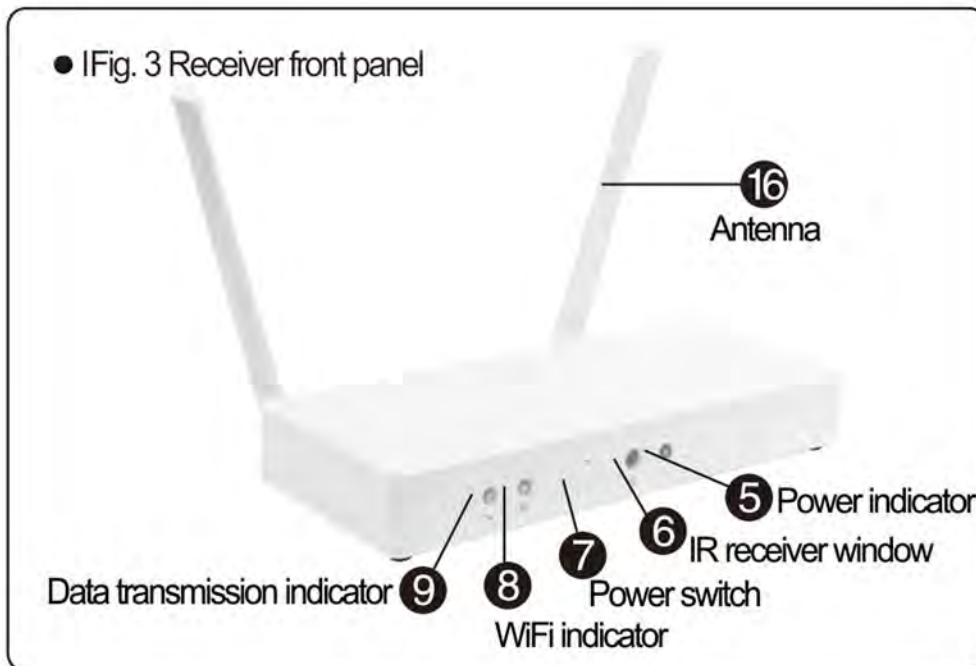


- 1.Power cable: Power cable.
- 2.HDMI connecting cable: Connects the receiver and projector; is of optimal length, simple to use and aesthetic.
- 3.Suspension bracket: Fix the receiver to the bracket, and then attach the bracket to the projector mount; simple, aesthetic and convenient.

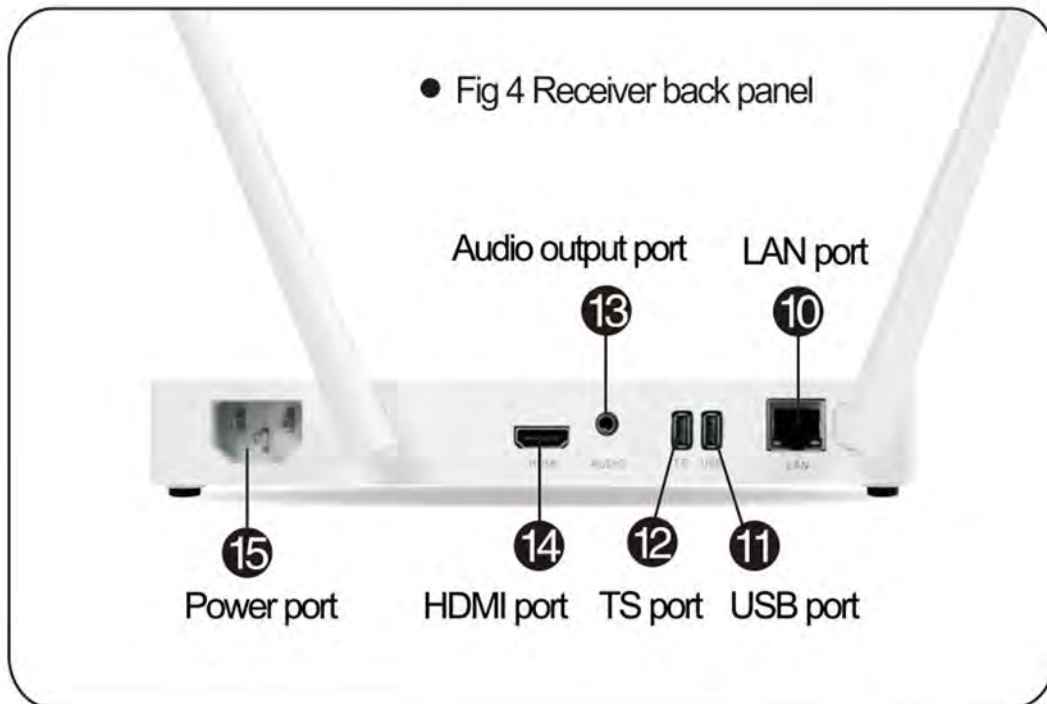


Suspension bracket

III. Description of device



5. Power indicator: When receiver is switched on, the indicator LED turns red.
6. IR receiver window: The receiver gets the signal sent from the remote control through the window, which is used to turn the receiver on or off.
7. Power switch: Manually turn on/off the receiver by pressing the button.
8. WiFi indicator: When WiFi of receiver is switched on and working normally, the indicator LED turns blue.
9. Data transmission indicator: When the computer transmits data to the receiver, the indicator flashes green.
10. LAN port: Ethernet port. When the receiver is connected to a LAN through this port, the computer connected wirelessly with the receiver, can connect to the internet.



11. USB port: If a display device has a USB port, then it can be connected to the receiver using this port.
12. TS port: This is a USB3.0 interface, typically used to connect to a touchscreen, and can also be used as a common USB port.
13. Audio output port: The computer wirelessly transmits audio signals to receiver, which then decodes the audio signal and outputs it through the interface.
14. HDMI port: If a display device has an HDMI port, then it can be connected to the receiver through this port.
15. Power port: AC power supply interface.
16. Antenna: Receives and emits WiFi signal.

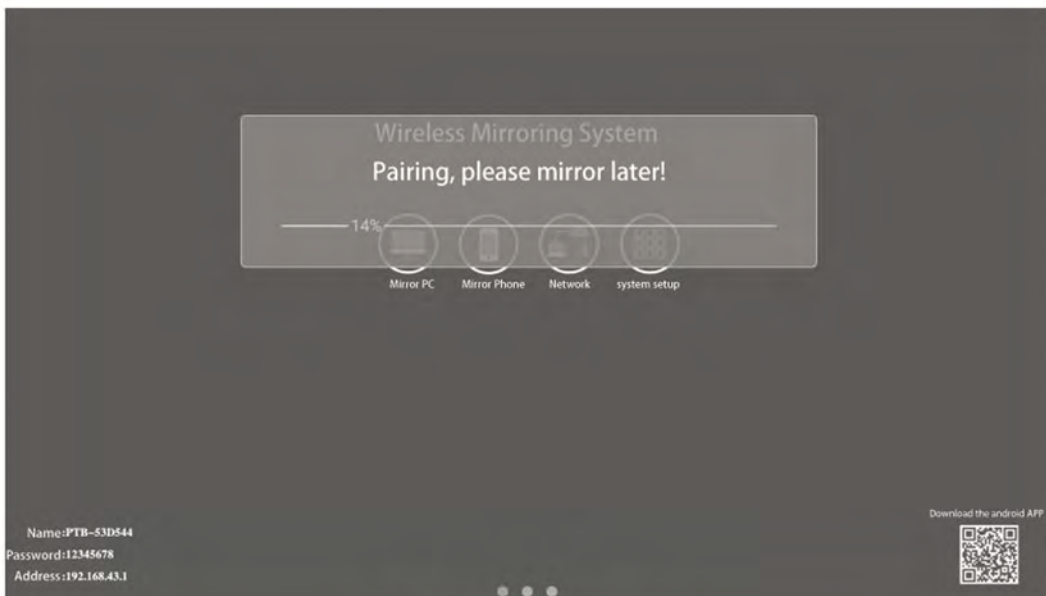
IV. Description of device

1. Connecting power supply: Plug the female head of the power cable in the receiver to supply power.
2. Connecting video cable: Connect the display device with the receiver through the HDMI cable.
3. Switching on: To power on the receiver, press the Power switch on the front panel of the receiver.
The following interface is displayed:

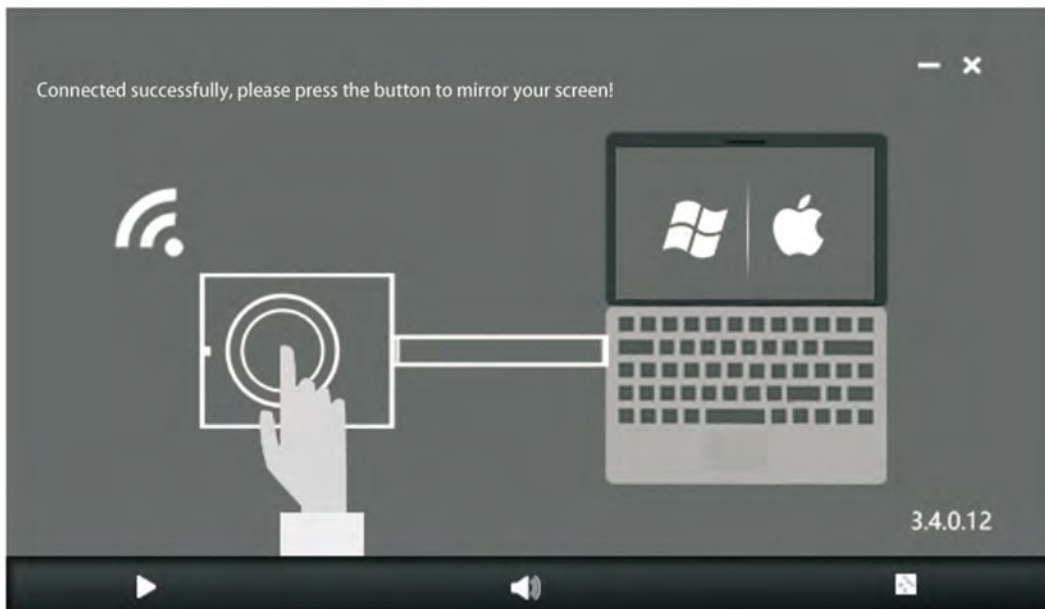


Receiver Startup Interface

4. Pairing: Connect the emitter to any USB interface on the back panel of the receiver disconnect the emitter when the prompt "Paired successfully" is displayed.
5. PC screen mirroring: Connect the emitter to the computer's USB port, the system will start up automatically; when an arrow flashes on the screen, press the button on the emitter for one-button wireless mirroring.



Emitter pairing

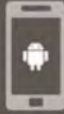



Client Interface

Note: When the emitter is connected to the computer for the first time, you need to double-click the PDBClient.exe file to install it first.

6. Phone screen mirroring: Click “Mirror Phone” on the Startup interface, and follow the below steps to operate:

Three-step mobile phone screen mirroring

Step 1	Step 2	Step 3
 <p>Use an appropriate QR code scanner APP on your phone to scan the QR code and download the APP.</p>	Wi-Fi : Password :	Launch the APP to smoothly mirror the screen.
 <p>Wi-Fi : Password :</p>	Slide finger up from the bottom of your phone's screen.	Select device to smoothly mirror the screen

Client Interface



The screenshot shows a mobile network settings interface. At the top, there is a header with a hamburger menu icon and the text "WLAN". Below the header is a "Start" toggle switch. The main content is a list of WLAN networks, each with a signal strength icon, a name, and a "save state" option. The networks listed are: feltu0518-2.4G, ATOSHIN10, ChinaNet-hhvA, ChinaNet-UVe9, PTB-ADF654-2.4G, PTB-danfengping-2.4G, PTB-E17888-2.4G, Tooffi-2.4G, and TP-LINK_F208. At the bottom of the list is a "+ Add Networking" option.

Network Settings Interface

7. Network settings: To connect the receiver to the Internet, click “Network setting” to enter the Network Settings menu. Select appropriate WiFi name, and input the password.

V. Other Functions

1. You can connect the receiver to a touchscreen through the USB port; you can also connect a USB mouse to the receiver through the USB port, to control the PC during screen mirroring.
2. If you want to output audio to a separate speaker system, then you can connect the speaker system to the audio output port in the receiver
3. You can connect the receiver to the network using the LAN port.

- 1) Q:Laptop connected to the emitter cannot connect to receiver.
A:Confirm that the emitter has been paired with the large screen Android USB port.
- 2) Q:Laptop connected to the emitter cannot connect to the receiver.
A:Confirm that the PTB program that you ran on your laptop, is working properly.
- 3) Q:Emitter plugged into the receiver's USB port cannot be paired successfully.
A:Please confirm that the emitter is plugged into the USB3.0 port. If the pairing progress bar fails to reach 100%, please check if the USB connection is loose.
- 4) Q:When emitter is plugged in, the PTB program in the USB flash disk cannot be run.
A: Please check if your operating system is Windows 7/8/10; Windows XP is not supported. Please check the program installation is not blocked by antivirus software like 360, Tencent Manager, Kingsoft AntiVirus, Baidu Manager, etc. If you use enterprise-level antivirus software, please contact your IT department. If an international antivirus software is used, please provide us its name and product version.
- 5) Q:When the QR code is scanned using an Android smartphone or a tablet PC, there is no prompt to download the APP.
A: Do not use WeChat to scan the QR code to download the APP, instead use an appropriate QR code scanner APP to download the APP using your browser.

- 6) Q: After the QR code is scanned using an Android smartphone or tablet PC, the downloaded APP cannot be installed.
A: Please ensure that your smartphone or tablet PC OS version is Android 5.0 or above.
- 7) Q: Laptop connected to the emitter cannot connect to the receiver.
A: Please check the files on the emitter USB flash disk; by default, there are only two files, ATRUN.INF and PTB.exe. If there is any other file, then your computer may be infected by a virus.
- 8) Q: When the emitter is plugged in, a dialog box appears, "New version found, need to restart, please wait!" repeatedly.
A: Please disconnect the emitter, locate the PTB service (32bit) program process from your computer's task manager, right-click and select "Open file location"; after navigating to the folder, navigate to the process again to terminate PTBservice(32bit) program, then navigate to the Bin folder and delete all files in the folder; finally reconnect the emitter, and navigate to the emitter folder to run the PTB.exe program.
- 9) Q: While using the device, the hotspot suddenly disconnects and screen mirroring fails.
A: Restart Android APK interface to refresh the device, check if the WiFi information can be acquired.
- 10) Q: Computer client interface displays connection is normal, but touchscreen does not connect.

- A: Restart receiver, and connect TS port of the display to the TS port of receiver using a USB cable.
- 11)Q: When subsequently you plug the emitter in the USB port, the client does not pop-up automatically.
- A: Check if the USB port can identify USB flash drive; you can try to connect the emitter in another USB port or restart the computer.
- 12)Q: Antivirus software such as 360 constantly prompts risk reminder.
- A: Please click “Allow software to run” when the risk reminder dialog box pops-up, and provide us the information of the prompt, so that we can certify the product with the antivirus product like 360.
- 13)Q: When conducting PC screen mirroring, the touchscreen control fails.
- A: Find “Pen and touch” option in “Adjust computer settings” on your computer; find “Touch” option to enable touch interface on your computer.

Guarantee clause

1. The main device has a 1 year warranty during which time it can be repaired for free, or a faulty or irreparable product can be replaced; accessories can be replaced within 3 months in case any quality problem is found, however, ordinarily they are not replaced.
2. Scope of warranty is limited to problems caused during normal use; therefore, if there are any burn marks inside the main device or there is obvious external physical damage to any part, then such products are not covered by the warranty.
3. The above two clauses are applicable in case of products with extended warranty purchased, during the extended warranty period.
4. Within scope of warranty, we shall complete repairs within 10 days; if the product cannot be repaired, it shall be replaced with a brand new similar product.
5. During warranty period, the user shall bear courier/shipping costs for sending the product to after-sales service point.
6. Even after the warranty period expires, our company will continue to provide technical support and after-sales service for at least 5 years.

Maintenance record

User name		
Send a time	problem description	return time

VIII. Packing list

Packing list

Number	Name	Quantity
1	Receiver	1
2	HDMI line	1
3	Power line	1
4	Certification	1
5	Specification	1
6	Emitter	
7	Two-pin power cable	
8	Remote control	
9	Suspension bracket	

